

Pleasure-Way

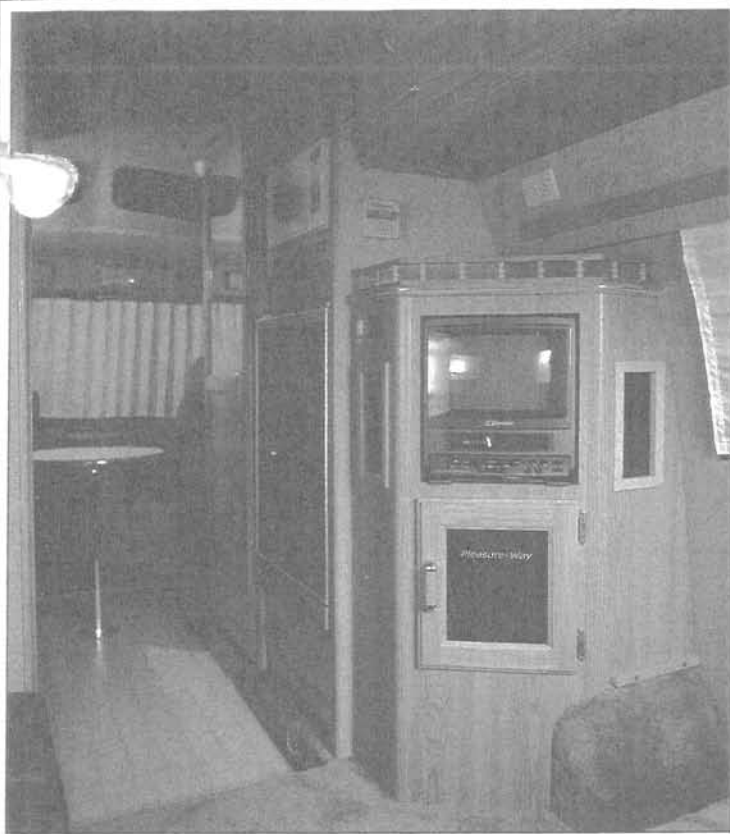


OWNER MANUAL 1990 – 1993

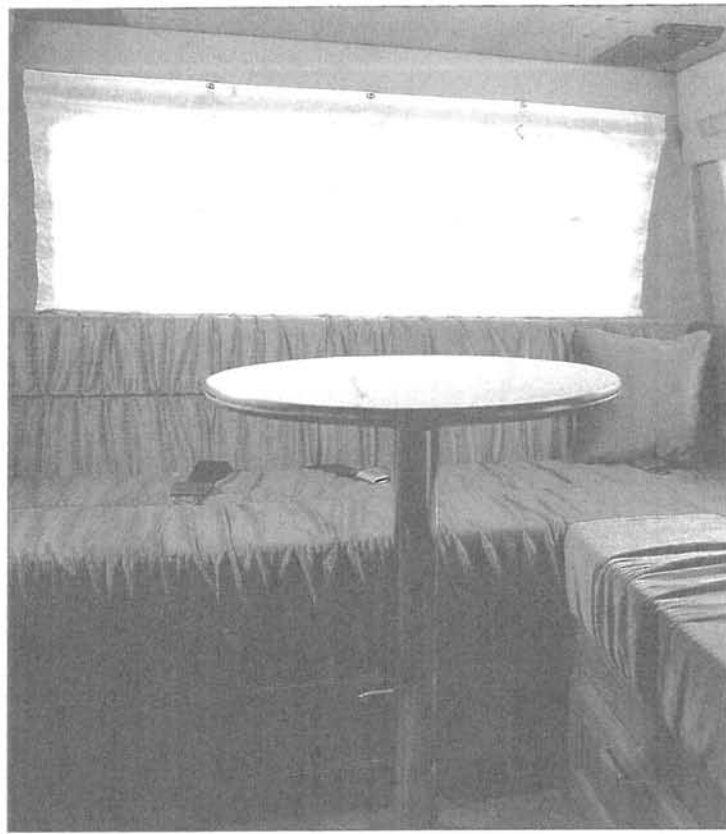


PLEASURE-WAY INDUSTRIES was established in 1986 out of a desire to offer you more in a CLASS B MOTORHOME.

For years class B motorhomes have always had a traditional appearance. We felt we could deviate from the standard to improve and create a floorplan design, that is not only unique but luxurious. Out of this desire we have designed and originated the FIRST class B motorhome with a REAR LIVINGROOM, featuring a L shaped sofa and a built in entertainment center. Along with creating this distinguished image we also concentrated on a quality interior finish, rival to none, starting from each custom fitted wall partition to an extensive use of oak. Everything entailed gives you a tight, smooth, elegant interior and a sleek aerodynamic exterior. WE ARE achieving our goal! Giving you SIMPLY THE BEST!



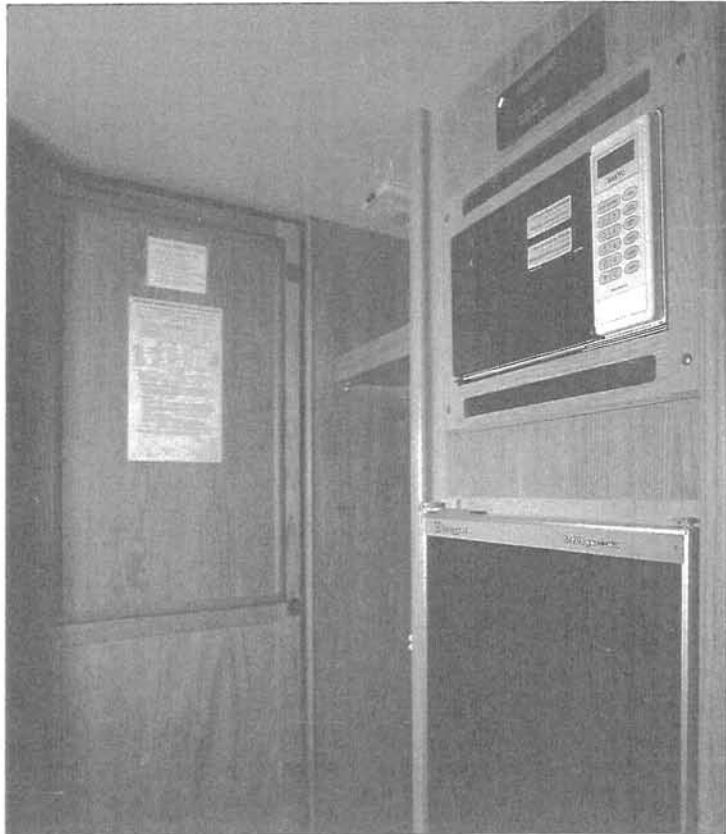
ENTERTAINMENT CENTER FEATURES A EMERSON 10" AC/DC COLOUR T.V. / VCR WITH REMOTE, ALONG WITH AN AERODYNAMIC AMPLIFIED BOOMERANG ANTENNA.



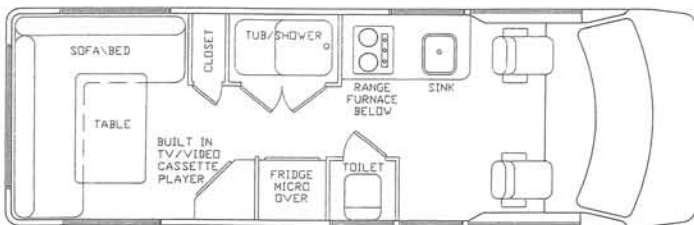
SPACIOUS REAR LIVINGROOM WITH A L SHAPED SOFA, THAT CONVERTS INTO A 50"x73" BED. FOR EXTRA PASSENGERS THE SOFA IS EQUIPPED WITH 2 SEAT BELTS. THESE ARE STANDARD WITH ALL REAR LIVINGROOM MODELS.



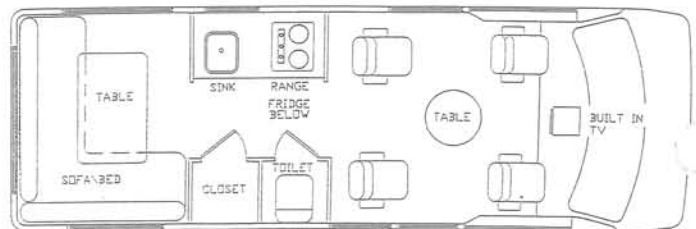
GALLEY FEATURES A 2 BURNER LP GAS RANGE, RANGE HOOD, STAINLESS STEEL SINK AND A SLIDE OUT PANTRY.



ACCOMPANYING THE GALLEY IS A DOMETIC 3 WAY 3 CUBIC FOOT REFRIGERATOR, SANYO .6 CUBIC FOOT MICROWAVE OVEN WITH TURNABLE, AND MONITOR PANEL.



PLEASURE-WAY RLS rear livingroom with shower



PLEASURE-WAY MPL multi-passenger rear livingroom

DODGE CHASSIS

GROSS VEHICLE WEIGHT 6400 LBS / 2910 KGS
 LENGTH (bumper to bumper) 5486 mm / 18'10"
 WHEELBASE 3241 mm / 127.6"
 WIDTH 2032 mm / 6'6" * HEIGHT 2463.8 mm / 8'1"
 FUEL CAPACITY 132L / 34.8 U.S. GAL
 MAGNUM 318 EFI ENGINE c/w ELECTRONIC OVERDRIVE
 AUTOMATIC TRANSMISSION * STEEL BELTED RADIAL TIRES
 FACTORY AIR * CRUISE CONTROL * TILT STEERING
 AM/FM STEREO CASSETTE
 POWER WINDOWS * POWER DOOR LOCKS * POWER REMOTE MIRROR

GMC CHASSIS

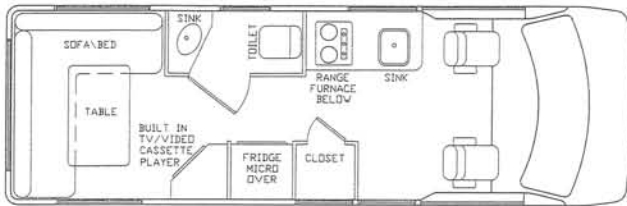
GROSS VEHICLE WEIGHT 8600 LBS / 3901 KGS
 LENGTH (bumper to bumper) 5486 mm / 18'10"
 WHEELBASE 3708 mm / 147"
 WIDTH 2057 mm / 6'7" * HEIGHT 2485 mm / 8'2"
 350 FUEL INJECTED OVERDRIVE ENGINE
 FUEL CAPACITY 125L / 33 U.S. GAL
 AUTOMATIC TRANSMISSION * STEEL BELTED RADIAL TIRES
 FACTORY AIR * CRUISE CONTROL * TILT STEERING
 AM/FM STEREO CASSETTE
 POWER WINDOWS * POWER DOOR LOCKS

MODEL SPECIFICATIONS RLS & MPL

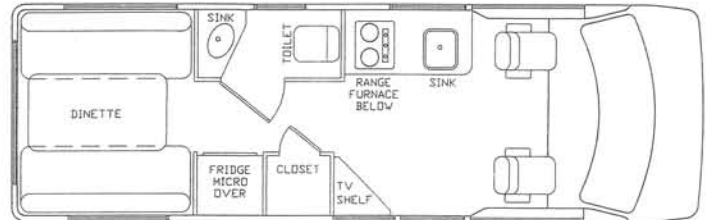
3 WAY REFRIGERATOR (3 Cu. Ft.) * MICROWAVE OVEN * 2-BURNER LP STOVE * STAINLESS STEEL SINK WATER FLUSH TOILET * RANGE HOOD
 AUTO FORCED AIR FURNACE * HOT WATER HEATER (RLS ONLY) * SMOKE DETECTOR * FIRE EXTINGUISHER * BATH/SHOWER (RLS ONLY)
 AUXILIARY BATTERY * 110V/12V 30 AMP CONVERTER * 2 110V RECEPTACLES * MONITOR PANEL * FRESH WATER TANK 63.6L / 16.8 U.S. GAL
 PROPANE TANK 30L / 7.9 U.S. GAL * DUAL HOLDING TANKS 135L / 35.6 U.S. GAL * CITY WATER CONNECTION * LOCKING FRESH WATER FILL
 2 REAR SEAT BELTS * CAPTAIN'S CHAIRS (SWIVEL & RECLINE) * CAPTAIN'S CHAIRS (FOLDING MINI BEDS MPL ONLY) * POWER ROOF VENT
 CONVERTIBLE REAR LIVINGROOM (50" x 73") * 8" SONY COLOUR T.V. & ANTENNA (MPL ONLY) * EXTRA COCKTAIL TABLE & STAND

OPTIONAL EQUIPMENT

ALUMINUM RUNNING BOARDS * FIBERGLASS RUNNING BOARDS * AWNING * BOOMERANG T.V. ANTENNA
 10" COLOUR T.V. / VCP 110V 12V REMOTE * HOT WATER HEATER * CONTINENTAL SPARE TIRE CARRIER



PLEASURE-WAY VRL rear livingroom with vanity



PLEASURE-WAY VST rear dinette with vanity

DODGE CHASSIS

GROSS VEHICLE WEIGHT 6400 LBS / 2910 KGS
 LENGTH (bumper to bumper) 5486 mm / 18'10"
 WHEELBASE 3241 mm / 127.6"
 WIDTH 2032 mm / 6'6" * HEIGHT 2463.8 mm / 8'1"
 FUEL CAPACITY 132L / 34.8 U.S. GAL
 MAGNUM 318 EFI ENGINE c/w ELECTRONIC OVERDRIVE
 AUTOMATIC TRANSMISSION * STEEL BELTED RADIAL TIRES
 FACTORY AIR * CRUISE CONTROL * TILT STEERING
 AM/FM STEREO CASSETTE
 POWER WINDOWS * POWER DOOR LOCKS * POWER REMOTE MIRROR

GMC CHASSIS

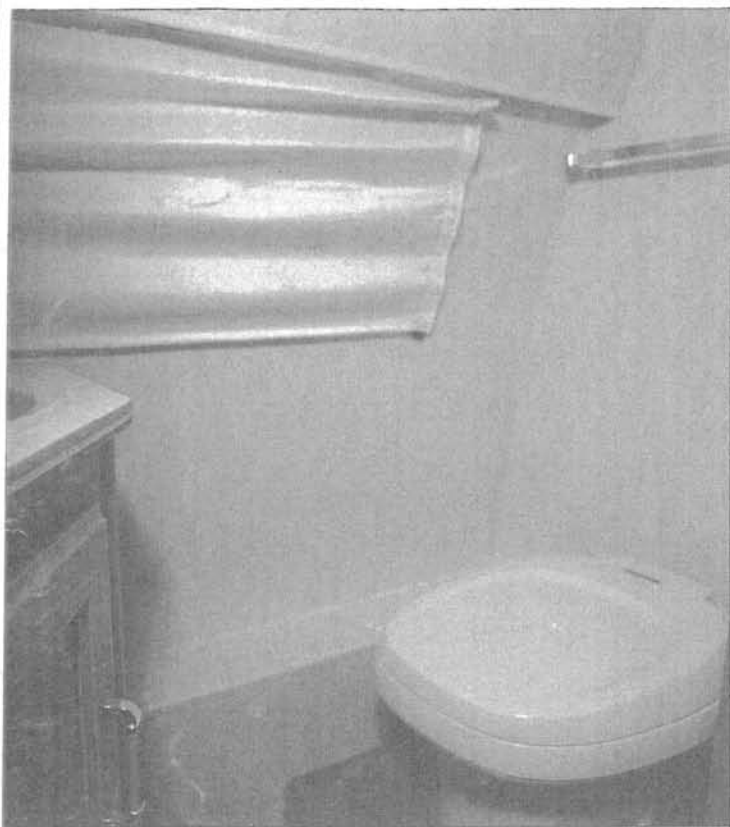
GROSS VEHICLE WEIGHT 8600 LBS / 3901 KGS
 LENGTH (bumper to bumper) 5486 mm / 18'10"
 WHEELBASE 3708 mm / 147"
 WIDTH 2057 mm / 6'7" * HEIGHT 2485 mm / 8'2"
 350 FUEL INJECTED OVERDRIVE ENGINE
 FUEL CAPACITY 125L / 33 U.S. GAL
 AUTOMATIC TRANSMISSION * STEEL BELTED RADIAL TIRES
 FACTORY AIR * CRUISE CONTROL * TILT STEERING
 AM/FM STEREO CASSETTE
 POWER WINDOWS * POWER DOOR LOCKS

MODEL SPECIFICATIONS VRL & VST

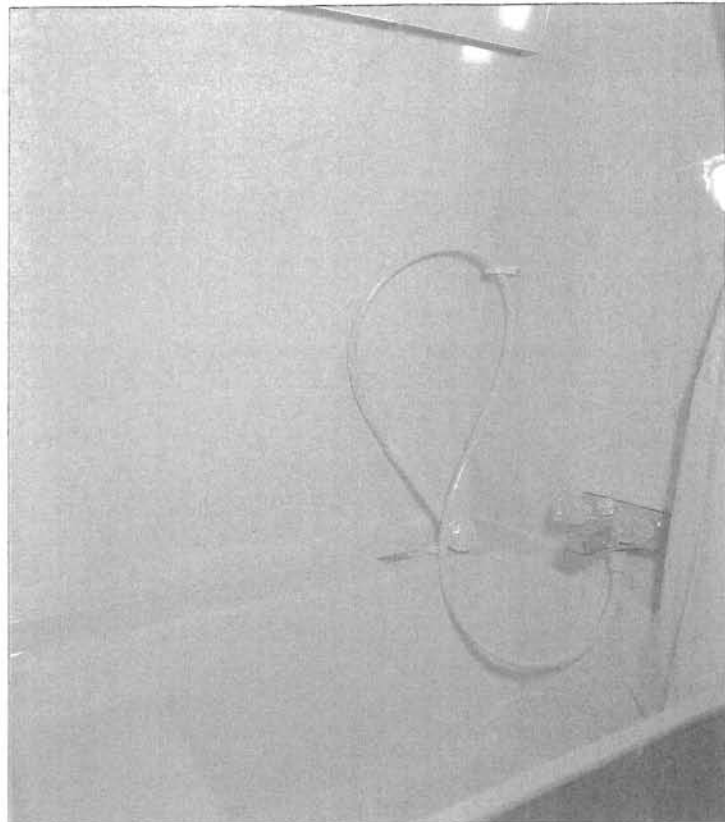
3 WAY REFRIGERATOR (3 Cu. Ft.) * MICROWAVE OVEN * 2-BURNER LP STOVE * STAINLESS STEEL SINK * AUTO FORCED AIR FURNACE
 WATER FLUSH TOILET * HOT WATER HEATER * VANITY * SMOKE DETECTOR * FIRE EXTINGUISHER * POWER ROOF VENT
 AUXILIARY BATTERY * 110V/12V 30 AMP CONVERTER * 3 110V RECEPTACLES * MONITOR PANEL * FRESH WATER TANK 63.6L / 16.8 U.S. GAL
 PROPANE TANK 30L/7.9 U.S. GAL. * DUAL HOLDING TANKS 140L / 37 U.S. GAL * CITY WATER CONNECTION * LOCKING FRESH WATER FILL
 2 REAR SEAT BELTS (VRL ONLY) * CAPTAIN'S CHAIRS (SWIVEL & RECLINE) * CONVERTIBLE REAR DINETTE (50" x 73" VST ONLY)
 CONVERTIBLE REAR LIVINGROOM (50" x 73" VRL ONLY) * EXTRA COCKTAIL TABLE & STAND * RANGE HOOD

OPTIONAL EQUIPMENT

ALUMINUM RUNNING BOARDS * FIBERGLASS RUNNING BOARDS * AWNING * BOOMERANG T.V. ANTENNA
 10" COLOUR T.V. / VCP 110V 12V REMOTE * CONTINENTAL SPARE TIRE CARRIER



VRL AND VST MODELS OFFER A PRIVATE BATHROOM WITH A SINK, MEDICINE CABINET, AND A THETFORD MARINE TOILET.



THE RLS MODEL GIVES YOU THE CONVENIENCE OF A TUB/SHOWER COMBINATION, LOCATED BEHIND TWO OAK DOORS.

PLEASE NOTE ...

ALL PLEASURE-WAY MOTORHOMES IN CANADA ARE C.S.A. CERTIFIED AND MAY EXCEED THE APPROVED INSTALLATION CRITERIA.

ALL MOTORHOMES IN THE UNITED STATES BEAR THE R.V.I.A. SEAL OF APPROVAL AND MAY EXCEED INDIVIDUAL STATE REQUIREMENTS.

BECAUSE OF OUR POLICY OF CONTINUOUS IMPROVEMENTS PLEASURE-WAY IND. RESERVES THE RIGHT TO MAKE PRODUCT CHANGES AT ANY TIME WITHOUT PRIOR NOTICE AND WITHOUT INCURRING OBLIGATIONS.

SOME MOTORHOMES DEPICTED IN THIS BROCHURE MAY BE PICTURED WITH OPTIONAL EQUIPMENT. SOME LIMITATIONS MAY APPLY WHEN DELETING OR ADDING CERTAIN OPTIONS. PLEASE SEE YOUR DEALER FOR ADDITIONAL INFORMATION OR CONTACT PLEASURE-WAY INDUSTRIES LTD.

WARRANTY

CHRYSLER CANADA OFFERS A BASIC WARRANTY WHICH INCLUDES A 7 YEAR 160,000 KM OUTER CORROSION, AND A 7 YEAR 115,000 KM POWER TRAIN PARTS WARRANTY.

PLEASURE-WAY MOTORHOME WARRANTY IS 1 YEAR INCLUSIVE ON ALL CRAFTSMANSHIP ENTAILED IN THE MANUFACTURING OF THE MOTORHOME.

ALL APPLIANCES ARE COVERED BY INDIVIDUAL WARRANTIES OFFERED BY THEIR RESPECTIVE MANUFACTURERS.

Pleasure-Way

302 Portage Ave., Sub 18

Saskatoon, Sask. S7H 0Y0

Tel: (306) 934-6578 Fax: (306) 934-7085



AUTHORIZED DEALER

PLEASURE-WAY INDUSTRIES takes great pride in the quality and excellence that the PLEASURE-WAY name represents. We appreciate having you as our customer and have provided this manual to introduce you to the many features of your new motorhome. Each person using the motorhome should take time to read this manual before operation. It will help you to better understand the many operational features of this recreational vehicle.

We hope you will enjoy your new PLEASURE-WAY and we wish you many kilometers of pleasant and carefree driving.

C O N T E N T S

Page 1.	FRESH WATER SYSTEM - water pump troubleshooting - water heater
Page 2.	BATHROOM - toilet troubleshooting - shower
Page 3.	WASTE SYSTEM - draining holding tanks
Page 4.	REMOVE AND REPLACE HOLDING TANKS
Page 5.	HOW TO WINTERIZE
Page 6.	ELECTRICAL SYSTEM - living area - external power
Page 7.	REFRIGERATOR AND FURNACE
Page 8.	TV/VCP
Page 9.	DINETTE ASSEMBLY
Page 10.	DINETTE DIAGRAM
Page 11.	CHASSIS AND COACH SPECIFICATIONS
Page 12.	LP GAS SYSTEM

**Some contents are not applicacable to all models.

FRESH WATER SYSTEM

The water system built into your motorhome provides full service similar to the system used in your home. A 12 - volt self-priming pump draws pressurized water from the fresh water storage tank to all cold faucets and the water heater. An automatic pressure switch, located in the water pump maintains a positive line pressure between 20 - 30 p.s.i.

WATER PUMP TROUBLESHOOTING

1. If pump will not prime
 - check to make sure there is water in the tank.
 - check to make sure battery is not run down.
 - check for kinks in the inlet hose.
 - check for air leaks at inlet fittings. If air is leaking into inlet fittings, tighten fittings or apply clamps as necessary.
 - check for clogged line.
2. If water pressure drops
 - check faucets and connections for leaks.
 - make sure faucet aerators are clean.
 - check to make sure there is water in the tank.
 - check to make sure battery is not run down.
3. If pump runs when there is no apparent demand for water
 - check all faucets and fixtures to make sure they are all shut off and not leaking.
 - check line for leaks.
 - make sure there is water in the tank.

WATER HEATER

Your motorhome is equipped with a 6 gallon water heater. Refer to the instruction manual for lighting instructions. LP gas is automatically supplied to heat water to a desired temperature and then automatically shut off, leaving the pilot light burning. A regulated mixture of gas and air is ignited by the pilot to provide a flame which is directed into the heating tube. The heating assembly is sealed off from the RV interior and is vented to the outside. If gas supply to the pilot is blown out, all gas supply is automatically cut off and controls will have to be reset to obtain pilot relighting.

BATHROOM

TOILET - see manufacturer's operating instructions.

Troubleshooting

1. Water keeps running into the bowl.
 - check to see if all the levers returned all the way back. Sticking may be caused by foreign material on the waste valve blade or blade seal at the bottom of the bowl. If the problem persists, replace water valve.
2. Toilet leaks, there is water on the floor.
 - If the leak is in the back of the toilet, check the water supply line connection and refer to manufacturer's installation instructions. If the leak is at the closet flange area, check the closet flange nuts for tightness. If leak continues, remove the toilet and check the closet flange height. The height should be between $\frac{1}{4}$ " and $\frac{7}{16}$ " above the floor. Adjust accordingly and replace the closet flange seat if damaged.
3. Poor Flush.
 - The levers must be held fully open during the flush. A good flush should be obtained within 2 to 3 seconds. If the problem persists remove the water supply line and check the water supply. The water supply line flow rate should be at least 10 litres per minute to ensure an adequate flush.

SHOWER

To protect the surface of your ABS plastic shower pan, it is recommended that a rubber shower mat be placed in the shower pan. Use a non-abrasive cleaner to clean your shower compartment. Do not use highly concentrated or high acid content household cleaners, as these may damage the shower compartment.

WASTE SYSTEMS

Before using your waste holding tank, deodererize it by adding one gallon of water and a commercial holding tank deoderizer through the toilet.

DRAINING WASTE HOLDING TANKS

1. Be sure the holding tank valve is closed, then remove the termination cap.
2. Join sewer hose to coupling on the main drain outlet.
3. Put end of sewer hose into sanitary dumping station opening. Make sure the hose does not sag and create a P-trap.
4. Open the termination valve on the holding tank. Open the solid waste first. Once empty, open grey waste valve. A garden hose may be left running into the toilet with valve open to further rinse the tank and sewer hose.
5. Close termination valve and replace cap.
6. Deoderize empty tank by adding one gallon of water and commercial holding tank deoderizer through the toilet.

NOTE: If holding tank is allowed to overflow, the overflow may back up through the toilet drain.

The drainage from the kitchen sink and shower pan is collected in a seperate grey water holding tank. This tank has its own dump valve but ties into the same termination valve outlet as the waste holding tank. Drain the grey water holding tank in the same way after draining the waste holding tank. This will help flush solids out of the sewer hose.

NOTE: If grey wate holding tank is allowed to overflow, the overflow may back up through the shower drain. If you are using a sewer hook-up in an RV park, keep the valve closed until the holding tank is at least partially full then drain. The large quantity of waste flow will provide more effective drainage and reduce tank stoppages.

BLACK/GREY WATER TANKS REMOVE & REPLACEPleasure-Way Models RL & RLS

1. Remove toilet and flange.
2. Remove carpet and top of base.
3. Cut silicone around pipe and remove 4"x6" piece of panel.
4. Cut stack pipe close to the 1½" T leaving about 2" for a coupler.
5. Remove four screws and nuts from each valve.
6. Cut kitchen drain close to tank leaving about 2" for a coupler.
7. Undue straping and let down tank.
8. To replace repeat above procedure.

Pleasure-Way Models ST, STS & MB

1. Remove toilet, toilet flange and bead of silicone.
2. Remove 12'x9" panel behind toilet.
3. Cut stack pipe close to floor leaving about 2" for a coupler.
4. Remove the four screws and nuts on each valve.
5. Cut kitchen drain close to tank and leave about 2" for a coupler.
6. Undue straping and let down tank.
7. To replace repeat above procedure.

Pleasure-Way Models VRL & VSTBLACK WATER TANK REMOVAL

1. Remove toilet and flange.
2. Remove carpet and unscrew plywood top of base.
3. Cut vent stack pipe as close to tank leaving about 2" for a coupler.
4. Cut 3" pipe underneath the van close to the floor leaving enough room (2") for a coupler.
5. Lift tank up and disconnect monitor panel wires.
6. to replace repeat above procedure.

GREY WATER TANK REMOVAL

1. Unhook gate valve.
2. Cut vent stack pipe behind exterior fridge vent leaving 2" for a coupler.
3. Loosen tank straps and pull tank down cutting vent stack again, leaving enough room for a coupler.
4. Cut sink drain pipe close to tank leaving room for a coupler.
5. Undo straps and let tank down.
6. To replace repeat above procedure.

*For a GM Chassis substitute #2 in grey water removal with this #2

2. From the inside remove panel from storage cupboard underneath the fridge and cut vent stack pipe there leaving room for a coupler. Continue with rest of procedure.

HOW TO WINTERIZE YOUR PLEASURE WAY.

1. Drain fresh water tank, holding tanks and hot water heater tank.
2. Bypass hot water heater by joining cold and hot water lines together either with a Bypass Kit or a hose.
3. On inlet side of waterpump, connect a hose with the other end in a gallon of Non-Toxic waterline Antifreeze. Let waterpump pump solution through the lines by turning on both COLD & HOT Water taps at lavatory and kitchen sink allowing at least a cup of Antifreeze to winterize the P-Traps under the sinks. Also if you have a faucet for a shower, run solution into P-Trap under tub or shower pan. Flush the toilet a few times until the colored solution appears.
4. Attaching a BLOW OUT PLUG in the city water inlet hatch, blow the water out of the regulator by using an Air Pressure Nozzle.

LIVING AREA ELECTRICAL SYSTEM

The motorhome living area electrical system is designed for convenience. It is capable of supplying the vehicle with at least 2 sources.

A 12 volt auxiliary battery supplies power to the interior (except plug receptables, water heater and roof air conditioners) for short term use. This battery is automatically charged whenever the motorhome is running. Time required to charge battery will depend on how low the battery is.

For long term power, your vehicle may be plugged into a 120 volt external power source which will supply 120 volt power throughout the interior, power all 12 volt components through a power converter and charge the auxiliary battery. Battery levels should be checked weekly, since the converter's charging system functions continually and can over charge the battery and cause it to malfunction.

The furnace and range operate only on LP Gas, and the refrigerator can operate on all three sources (propane, 12 volt, 120 volt). The furnace fan operates on 12 volts.

Your unit is equipped with a 120/12 volt power converter. Its function is to take part of the 120 volt current that is received when the unit is plugged into a external power source and change it to 12 volts which powers much of the motorhome.

The chassis battery is not tied into the coach living area system. In order to provide constant starting power for the chassis engine, an isolater allows both batteries to be charged when the engine is running, but does not allow the chassis battery to discharge when using the coach living area system. Auxiliary battery will charge at a slower rate when using driving lights, chassis air, etc.

EXTERNAL POWER

A 6 meter 30 amp. power cord is provided in the power cord compartment located on the passengers side of the coach. To make an external power connection, remove the cord from the compartment and plug it into any adequate 120 volt power source to activate all power circuits. The connector is rated for 30 amp. capacity.

NOTE:

There is an opening in the compartment door which allows the door to remain closed while the power cord is in use.

REFRIGERATOR - 12V/120V LP GAS

When your RV is stationary, it should be leveled. A bubble level should be placed on the freezer shelf to check refrigerator for levelness.

When the refrigerator is switched to electric operation, the ammonia/water mixture is heated by a heating element instead of the burner flame.

All refrigerators are designed for 3-way operation using LP gas, 120 volt or 12 volt DC power.

For LP gas operation, turn the selector to gas and follow the instructions on the fridge for lighting. Turn the thermostat to the highest temperature that will still provide adequate refrigeration. For 120 volt AC operation, make sure the power cord is connected and switch the refrigerator selector to electric. For 12 volt DC operation, switch the selector to 12 volt setting power is now furnished by the RV battery. However, 12 volt power should not be used when the unit is parked in order to prevent battery drainage.

FURNACE

The furnace should not be operated when the vehicle is under way and the LP gas should be turned off at the LP tank.

LIGHTING INSTRUCTIONS

Refer to furnace manufacturer's manual.

EMERSON 10" TV/VCP

On the left side of the entertainment centre there is a switch that controls the 12 volt power supply to the T.V. including memory, as well as the booster or amplifier that is contained in the Boomerang Antenna. When this switch is in the ON position there will be a bpower drain on the aux. battery even without the T.V. on. Therefore it is advisable to turn the switch OFF if the unit will not be in operation for an extended period of time.

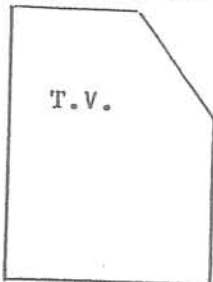
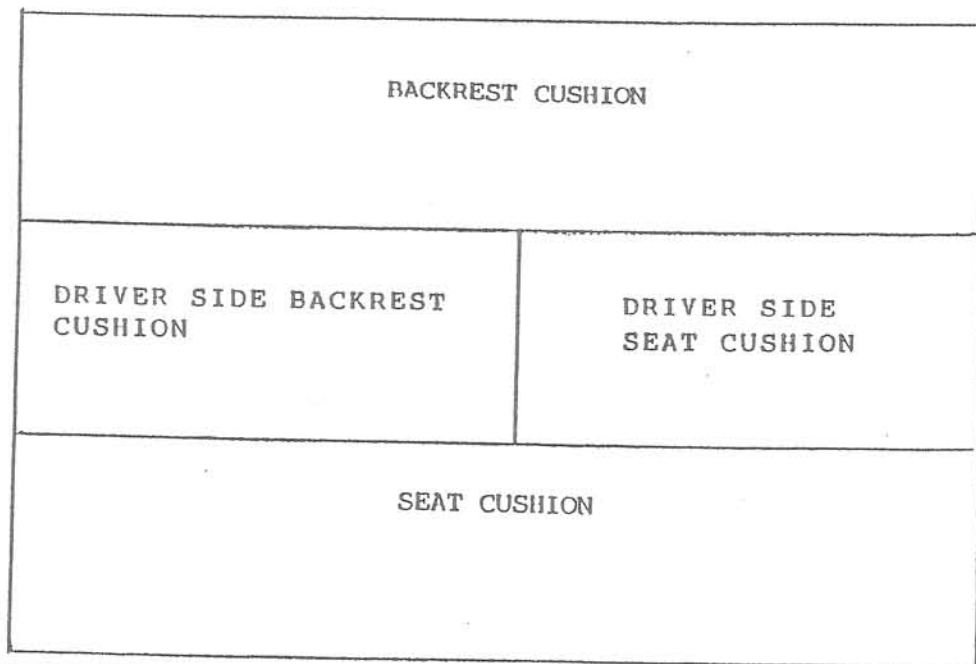
Your Emerson T.V. is equipped to function on AC or DC power supply. When shipped from the factory the unit is set on the DC (12 volt) power supply. The unit should be switched to the AC power supply if being used for an extended period of time. This is done by reaching up behind the T.V. (through the door below) and sliding the switch (see page 9 of Emerson Owners Manual) to the right (towards window).

To remove T.V. from entertainment centre open the door below the T.V. In the top part of the cabinet face there are 2 screws which go up into the two front feet to the T.V. Remove the two screws and the T.V. will slide out of the cabinet enabling you to disconnect the cable and power supply cords.

INSTRUCTIONS FOR L-SHAPED SOFA BED.

1. Remove board which is stored behind sofa backrest cushion on driver's side. Place this board on oak support rails on entertainment center and front of sofa bed.
2. Next remove the two small cushions and the driver side backrest cushion and set aside.
3. Now slide the long seat cushion forward to the front of the bed. Lay the backrest cushion down where the seat cushion was.
4. The driver's side backrest cushion and the larger of the two remaining seat cushions are placed in the middle to complete the bed. There is one small cushion not being used when the sofa is in the bed position.

MPL VRL RLS MODELS ONLY



DODGE CHASSIS

GROSS VEHICLE WEIGHT 6400 LBS / 2910 KGS
LENGTH (bumper to bumper) 5486 mm / 18'10"
WHEELBASE 3241 mm / 127.6"
WIDTH 2032 mm / 6'6" * HEIGHT 2463.8 mm / 8'1"
FUEL CAPACITY 132L / 34.8 U.S. GAL
MAGNUM 318 EFI ENGINE c/w ELECTRONIC OVERDRIVE
AUTOMATIC TRANSMISSION * STEEL BELTED RADIAL TIRES
FACTORY AIR * CRUISE CONTROL * TILT STEERING
AM/FM STEREO CASSETTE
POWER WINDOWS * POWER DOOR LOCKS * POWER REMOTE MIRROR

GMC CHASSIS

GROSS VEHICLE WEIGHT 8600 LBS / 3901 KGS
LENGTH (bumper to bumper) 5486 mm / 18'10"
WHEELBASE 3708 mm / 147"
WIDTH 2057 mm / 6'7" * HEIGHT 2485 mm / 8'2"
350 FUEL INJECTED OVERDRIVE ENGINE
FUEL CAPACITY 125L / 33 U.S. GAL
AUTOMATIC TRANSMISSION * STEEL BELTED RADIAL TIRES
FACTORY AIR * CRUISE CONTROL * TILT STEERING
AM/FM STEREO CASSETTE
POWER WINDOWS * POWER DOOR LOCKS

MODEL SPECIFICATIONS VRL & VST

3 WAY REFRIGERATOR (3 Cu. Ft.) * MICROWAVE OVEN * 2-BURNER LP STOVE * STAINLESS STEEL SINK * AUTO FORCED AIR FURNACE
WATER FLUSH TOILET * HOT WATER HEATER * VANITY * SMOKE DETECTOR * FIRE EXTINGUISHER * POWER ROOF VENT
AUXILIARY BATTERY * 110V/12V 30 AMP CONVERTER * 3 110V RECEPTACLES * MONITOR PANEL * FRESH WATER TANK 63.6L / 16.8 U.S. GAL
PROPANE TANK 30L./7.9 U.S. GAL. * DUAL HOLDING TANKS 140L / 37 U.S. GAL * CITY WATER CONNECTION * LOCKING FRESH WATER FILL
2 REAR SEAT BELTS (VRL ONLY) * CAPTAIN'S CHAIRS (SWIVEL & RECLINE) * CONVERTIBLE REAR DINETTE (50" x 73" VST ONLY)
CONVERTIBLE REAR LIVINGROOM (50" x 73" VRL ONLY) * EXTRA COCKTAIL TABLE & STAND * RANGE HOOD

MODEL SPECIFICATIONS RLS & MPL

3 WAY REFRIGERATOR (3 Cu. Ft.) * MICROWAVE OVEN * 2-BURNER LP STOVE * STAINLESS STEEL SINK * WATER FLUSH TOILET * RANGE HOOD
AUTO FORCED AIR FURNACE * HOT WATER HEATER (RLS ONLY) * SMOKE DETECTOR * FIRE EXTINGUISHER * BATH/SHOWER (RLS ONLY)
AUXILIARY BATTERY * 110V/12V 30 AMP CONVERTER * 2 110V RECEPTACLES * MONITOR PANEL * FRESH WATER TANK 63.6L / 16.8 U.S. GAL
PROPANE TANK 30L./7.9 U.S. GAL. * DUAL HOLDING TANKS 135L / 35.6 U.S. GAL * CITY WATER CONNECTION * LOCKING FRESH WATER FILL
2 REAR SEAT BELTS * CAPTAIN'S CHAIRS (SWIVEL & RECLINE) * CAPTAIN'S CHAIRS (FOLDING MINI BEDS MPL ONLY) * POWER ROOF VENT
CONVERTIBLE REAR LIVINGROOM (50" x 73") * 8" SONY COLOUR T.V. & ANTENNA (MPL ONLY) * EXTRA COCKTAIL TABLE & STAND

LP-Gas containers shall not be placed or stored inside the vehicle. LP-Gas containers are equipped with safety devices that relieve excessive pressure by discharging gas to the atmosphere.

NOTE: IT IS NOT SAFE TO USE COOKING APPLIANCES FOR COMFORT HEATING.

Cooking appliances need fresh air for safe operation. Before operation:

1. Open overhead vent or turn on exhaust fan, and
2. Open window.

Unlike homes, the amount of oxygen supply is limited due to the size of the recreational vehicle, and proper ventilation when using the cooking appliance(s) will avoid dangers of asphyxiation. It is especially important that cooking appliances not be used for comfort heating as the danger of asphyxiation is greater when the appliance is used for long periods of time.

NOTE: DO NOT FILL LP CONTAINER(S) TO MORE THAN 80 PERCENT OF CAPACITY

Overfilling the LP-Gas container can result in uncontrolled gas flow, which can cause fire or explosion. A properly filled container will contain approximately 80 percent of its volume as liquid LP-Gas.

Do Not Use potable fuel-burning equipment, including wood and charcoal grills and stoves, inside the recreational vehicle. The use of this equipment inside the recreational vehicle may cause fires or asphyxiation.

Also Do Not bring or store LP-Gas containers, gasoline, or other flammable liquids inside the vehicle because a fire or explosion may result.

NOTE: IF YOU SMELL GAS

1. Extinguish any open flames, pilot lights, and all smoking materials.
2. Do not touch electrical switches.
3. Shut off the gas supply at the tank valve(s) or gas supply connection.
4. Open doors and other ventilating openings.
5. Leave the area until odor clears.
6. Have the gas system checked and leakage source corrected before using again.

LP-Gas regulators must always be installed with the diaphragm vent facing downward. Regulators that are not in compartments have been equipped with a protective cover. Make sure that regulator vent faces downward and that cover is kept in place to minimize vent blockage that could result in excessive gas pressure causing fire or explosion.

. WARRANTY

Pleasure-Way Industries Ltd. warrants the specified new Motorhome free from defects in material and workmanship, under normal use and service. Obligation, under this warranty, shall be limited to 12 months after the date of purchase by the original retail purchaser from an Authorized Dealer and shall be limited to making good, at our factory, any part or parts thereof upon return to the factory.

This warranty will not apply where a Motorhome has been altered outside our factory in any way so as, in our judgment, to affect its stability or reliability, or which has been subject to misuse, negligence, or accident. This warranty does not cover tires, refrigerator, stove, heaters, chassis, powertrain, or any other component which is under a separate guarantee from the manufacturer and can be obtained from their service facilities throughout North America.

The warranty is expressly in lieu of all other warranties expressed or implied and all other obligations or liabilities on our part of any kind or character, including liabilities for alleged representation or negligence. We neither assume nor authorize any other person to assume for us any liability in connection with the sale of our Motorhome other than expressed in the above paragraph.

All correspondence should be directed to the Dealer from whom the Motorhome was purchased and must specify the serial number and date of purchase of the Motorhome in question.