

Pleasure-Way

Industries Ltd.

Mercedes Benz Sprinter Plateau Dual Wheel



Owner's Manual



WARNING

IT IS NOT SAFE TO USE COOKING APPLIANCES FOR COMFORT HEATING.

Cooking appliances need fresh air for safe operation.

Before Operation:

Open overhead vent or turn on exhaust fan

Open Window

FAILURE TO COMPLY COULD RESULT IN DEATH OR SERIOUS INJURY.

Unlike homes, the amount of oxygen supply is limited due to the size of the recreational vehicle, and proper ventilation when using the cooking appliance(s) avoids dangers of asphyxiation. It is especially important that cooking appliances not be used for comfort heating, as the danger of asphyxiation is greater when the appliance is used for long periods of time.



WARNING

DO NOT FILL CONTAINER (S) TO MORE THAN 80 PERCENT OF CAPACITY.

FAILURE TO COMPLY COULD RESULT IN DEATH OR SERIOUS INJURY.

Overfilling the propane container can result in uncontrolled propane flow, which can cause fire or explosion. A properly filled container contains approximately 80 percent of its volume as liquid propane.



DANGER

IF YOU SMELL PROPANE:

Extinguish any open flames, pilot lights, and all smoking materials

Do not touch electrical switches

Shut off the propane supply at the container valve(s) or propane supply connection

Open doors and other ventilating openings

Leave the area until the odor clears

Have the propane system checked and leakage source corrected before using again

FAILURE TO COMPLY COULD RESULT IN EXPLOSION RESULTING IN DEATH OR SERIOUS INJURY.



WARNING

Propane cylinders shall not be placed or stored inside the vehicle. Propane cylinders are equipped with safety devices that relieve excessive pressure by discharging propane to the atmosphere.

FAILURE TO COMPLY COULD RESULT IN DEATH OR SERIOUS INJURY.

PLEASURE-WAY INDUSTRIES LTD.

Pleasure-Way Industries Ltd. takes great pride in the quality and excellence that the Pleasure-Way name represents. We appreciate having you as a customer and welcome you into the Pleasure-Way family. This manual is provided to introduce you to the many features of your new Dodge Ascent including operation, maintenance and warranties. **We strongly advise you to take time to read this manual, the Ford chassis owners manual as well as those of the motorhome components before you use your new motorhome.** It will help you to better understand the many operational features of this recreational vehicle.

After reading this manual, be sure to keep it in the motorhome as a reference. Your Pleasure-Way dealer will be glad to answer any further questions about the operation of your motorhome and the appliances.

All reasonable precautions have been taken in the preparation of this manual. We have been as accurate as possible at the time of this publication. However, due to our policy of continuous improvement and refinement to our product, Pleasure-Way reserves the right to make product changes at any time without prior notice and without incurring obligations. As a result, Pleasure-Way assumes no responsibility for errors or omissions in the accuracy in the content of this manual.

We know that you will enjoy your new Pleasure-Way and we wish you many miles of pleasant and carefree driving. Happy Travels!

TABLE OF CONTENTS

Warranties and Polices	6-7
Safety	8-10
Motor Home Exterior	11-15
Motor Home Size	11
Exterior Side Photos	12
LP fill Valve	13
Furnace Vent	13
Driver's Exterior Shower	13
Driver's Water Heater Vent	13
Driver's Side Sewer Dump	14
Driver's Side Fridge Vent	14
Passenger's Side Fresh water fill	15
Passenger's Side Exterior 110 volt plug	15
Passenger's Side Porch light	15
Coach & Chassis Battery	15
Travel Preparation	16
Motor Home Systems	17-29
LP Gas System	17
LP Remote Off/On	18
How To Use LP Appliances	18
Cook Top	18
Furnace	19
Refrigerator	19
Water Heater	20
Fresh Water System	20
Fresh Water Fill/Drain	21
City Water Connection	21
Water Pump	21-22
Toilet	22
Shower	22
Waste System	23
Winterizing	24-25
Living Area Electrical System	26
Distribution Panel	26
12 Volt Reset Breakers	27
12-Volt Battery Disconnect Switch	27
Auxiliary Battery	27
Battery Care	28
External Power	28
Monitor panel Area	28
Generator	28

Motor Home Interior	29
Interior Cockpit Map Light	29
Refrigerator	29
Microwave	29
TV/DVD	30
Theatre System User Guide	30-32
TS Bed Assembly	32
TD Bed Assembly	32
Coach Specifications and Features	30

PLEASURE-WAY INDUSTRIES LTD. WARRANTIES & POLICIES

Customer Responsibility

It is important you read and understand the information in this manual before using your RV.

Familiarize yourself with the applicable warranties. You are responsible for ensuring the procedures for obtaining warranty repair are followed properly. It is your responsibility and obligation to return your RV to your dealership for warranty service repair.

As the owner of the RV, you are responsible for regular and proper maintenance performed in accordance with this manual and the OEM manuals. Regular and proper maintenance will help prevent conditions arising from neglect that are not covered by warranty.

Pleasure-Way Warranty

Pleasure-Way Industries Ltd. warrants the specified new Motorhome free from defects in material and craftsmanship, on the sections manufactured by Pleasure-Way Industries Ltd. under normal use and service. Pleasure-Way Industries Ltd.'s obligation under this warranty shall be limited to 36 months / 36,000 miles / 60,000 kilometers (which ever comes first) after the date of purchase by the **original retail purchaser** from an Authorized Pleasure-Way Dealer and shall be limited to making good, at our factory, any part or parts thereof upon return to the factory.

The conditions of this warranty shall not and will not apply to the following:

1. If the Motorhome has been altered outside our factory in any way so as, in our sole opinion, to affect its stability or reliability.
2. If the Motorhome, in our sole opinion, has been subject to misuse, negligence, or accident.
3. Tires, refrigerator, stove, furnace, roof air conditioner, chassis, power train, and any other components, which is under a separate warranty from the manufacturer, and service can be obtained from their facilities in North America.
4. Unauthorized repairs, alterations or modifications;
5. Routine maintenance;
6. Failure of the coach and / or chassis resulting in incidental damages such as loss of use of Motorhome, inconvenience, cost of rental vehicle, and / or cost of accommodations, travel expenses & meals, and other miscellaneous incidental expenses.
7. Damages resulting by: hail, tornadoes, lightning, floods, earthquakes, plow winds, fire, rain & environmental conditions which include tree sap, tar, chemicals, oils, salts, and / or Acts of God.
8. Accident

The conditions of this warranty shall not and will not apply to degeneration due to wear and exposure after these limitations:

1. For one year from the original retail purchase date or 12,000 miles or 20,000 kilometers (which ever comes first), by the original retail purchaser from an Authorized Pleasure-Way Dealer:
 - a) All seat, curtain, door panel and wall fabrics used in the coach;
 - b) Exterior fibreglass surfaces;
 - c) Window seals;
 - d) Exterior power cable hatch, city water fill hatch, porch light, & cable TV outlet;.
 - e) Carpet.
 - f) Black and gray water termination valves;

2. For 90-days from date of the original retail purchase by the original retail purchaser from an Authorized Pleasure-Way Dealer:
 - a) Window screens
 - b) Fresh water tank drain tap; and
 - c) Exterior door catches, cam locks, thumb latches & hinges.

The warranty is expressly in lieu of all other warranties expressed or implied and all other obligations or liabilities for alleged representation or negligence. Pleasure-Way Industries Ltd. neither assumes nor authorizes any other person to assume for us any liability in connection with the sale of our Motorhomes other than expressed above.

All correspondence should be directed to the dealer from whom the Motorhome was purchased and must specify the serial number and date of purchase of Motorhome in question.

Pleasure-Way Industries Ltd.'s Warranty Policies

1. Warranty repairs, within the three year or 36,000 miles / 60,000 kilometers (whichever comes first) limited warranty.

2. The Pleasure-Way Customer Care Delivery Form must be on file before any claims will be processed. Claims made without warranty registration cards will be rejected until proof of ownership can be established.

3. Pleasure-Way Industries Ltd. will not reimburse any claims for any work done on any components or appliances that are covered under their respected manufacturers' warranties. These warranties must be claimed through the manufacturer of the appliance or component. Examples: refrigerator, microwave, roof air conditioner, water pump, toilet, stove, TV package components, etc.

4. All warranty work that is required to be performed on the chassis must be taken to an authorized Dodge Sprinter dealership and processed through their warranty procedures. Pleasure-Way Industries Ltd. will not reimburse any claims regarding the chassis. Pleasure-Way Industries Ltd. will pay for the removal and reinstallation of Motorhome components only if absolutely necessary to perform Dodge warranty repairs. Pleasure-Way Industries Ltd. will not reimburse any costs in the removal and reinstallation of these components if it is:
 - a) Out of the warranty period
 - b) Non-warranty repairs
 - c) Routine maintenance

SAFETY

For your safety and ease of mind while travelling with your Pleasure-Way Motorhome, we have provided safety components throughout the vehicle. In order for your vehicle to maintain the safest possible conditions, these components must be tested and maintained on a regular basis, according to the detailed manufacturer's operating instructions.

All Pleasure-Way Motorhomes in Canada are CSA and CMVSS Certified, and may exceed the approved installation criteria.

All Pleasure-Way Motorhomes in the United States are FMVSS certified and bear the R.V.I.A. seal of approval, and may exceed the individual state requirements.

Smoke Detector

A smoke detector is provided on the ceiling of your unit near the front. Smoke detectors may give you a warning of fire and smoke, but only if you use and maintain them in accordance to the manufacturer's instructions. Testing of this detector should be carried out weekly. Ensure you connect the battery inside the detector upon receiving of your new unit and that you install a fully charged fresh battery at least once a year.



Fire Extinguisher

A 5-pound capacity fire extinguisher is provided at the side door main entrance door in the step well. Warning: This fire extinguisher is a type "BC", which will extinguish flammable liquids and electrical fires, but not wood, paper and cloth fires. You should inspect the extinguisher at least once a month according to the manufacturer's instructions.



LP (propane) Gas Detector

A liquid propane (LP) (propane) gas detector is provided near the floor level at the lower bench area of the motorhome interior. This detector will operate to detect liquid propane gasses as well as other gasses that are heavier than air. Your components that require LP (propane) gas are provided with complete ventilation to the exterior and are sealed off to the interior for your added safety. This detector is powered by the auxiliary battery and is operating at all times unless the battery is disconnected. The LP (propane) gas detector should be tested every week or every time before a trip, whichever occurs first. The test procedure should be performed in accordance to the manufacturer's instructions.

NOTE: The LP (propane) gas detector will sound to indicate a low coach battery.



Carbon Monoxide Sensor

A carbon monoxide sensor is provided in the monitor panel above the closet. This detector only indicates the presence of carbon monoxide gas at the sensor. Carbon monoxide gas may be present in other areas. Warning: Carbon Monoxide Gas cannot be seen or smelled and can kill you. This detector should be tested at least once per week or before every time the coach is taken on a trip. The test procedure should be in accordance to the manufacturer's instructions. Carbon monoxide sensors are installed in units equipped with generators or generator ready options.

NOTE: The carbon monoxide sensor will sound to indicate a low coach battery.



GFCI Outlet

Ground fault circuit interrupter (GFCI) 110 volt receptacle in the bathroom provides protection against line to ground electrical shock hazards that could be harmful or even fatal. The outlets that are on this circuit are the exterior receptacle, galley receptacle, bathroom and fridge receptacles.

These receptacles are to be tested at least once a month in accordance with the manufacturer's instructions.



Emergency Escape

If the need to make an emergency escape from the interior of your motorhome arises, all interior doors are equipped with interior access latches. Your choice of escape routes are as follows, the main entrance at the side door, the driver and passenger's side front doors and the rear doors.

Refueling

When you are refueling your fuel tank, ensure that your vehicle is shut off and your main LP (propane) valve is shut off. Ensure that your pilot lights have been extinguished as well. Warning: Even with the main LP (propane) valve shut off there is enough gas in the LP (propane) lines for the pilot light to continue to burn.

Filling the LP (propane) Gas Fuel Cylinder

When you are filling the LP (propane) Gas Fuel Cylinder, ensure that all pilot lights have been extinguished and that there are no open flames present. Ensure that your vehicle is turned off. The main shut off valve is the electrical switch inside the exterior component compartment.

NOTE: Ensure the propane system valve is fully shut when vehicle is in motion. It is not safe to travel while propane appliances are in use.

MOTORHOME EXTERIOR

Motorhome Dimensions and Capacities

Your Motor Home is larger than your standard van or automobile, so please be careful when entering underpasses, garages, parkades, etc.

DIMENSION

LENGTH BUMPER TO BUMPER	22'9"	693.5 cm
LENGTH WITH TIRE & CARRIER	24' 1"	734 cm
HEIGHT WITH CARRIER AC	9' 6"	289.6 cm
WIDTH WITHOUT SIDE MIRRORS	7'	213 cm
WIDTH WITH MIRRORS	7' 10"	239 cm
INTERIOR HEIGHT WITHOUT OPTIONS	6' 3"	190 cm
BED AREA (APPROXIMATE)	L – 75 ¾" W – 69 ½"	192.4 cm 176.5 cm

Tank Size

BLACK WATER	12 US GAL	45.4 LITRE
GRAY WATER	35 US GAL	132 LITRE
FRESH WATER	24 US GAL	90.8 LITRE
PROPANE AT 80%	9.6 US GAL	36.3 LITRE
DEISEL FUEL	25 US GAL	94.6 LITRE

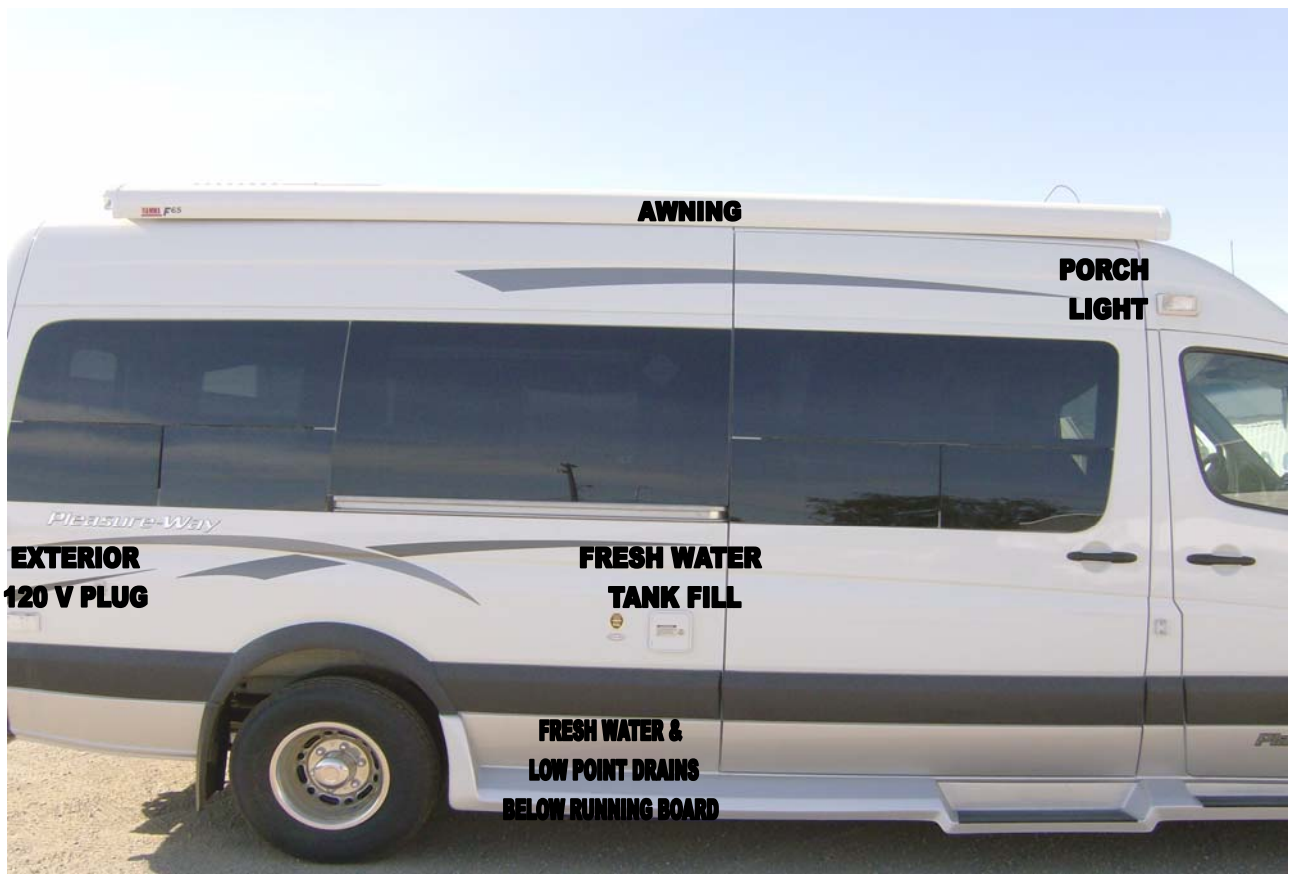
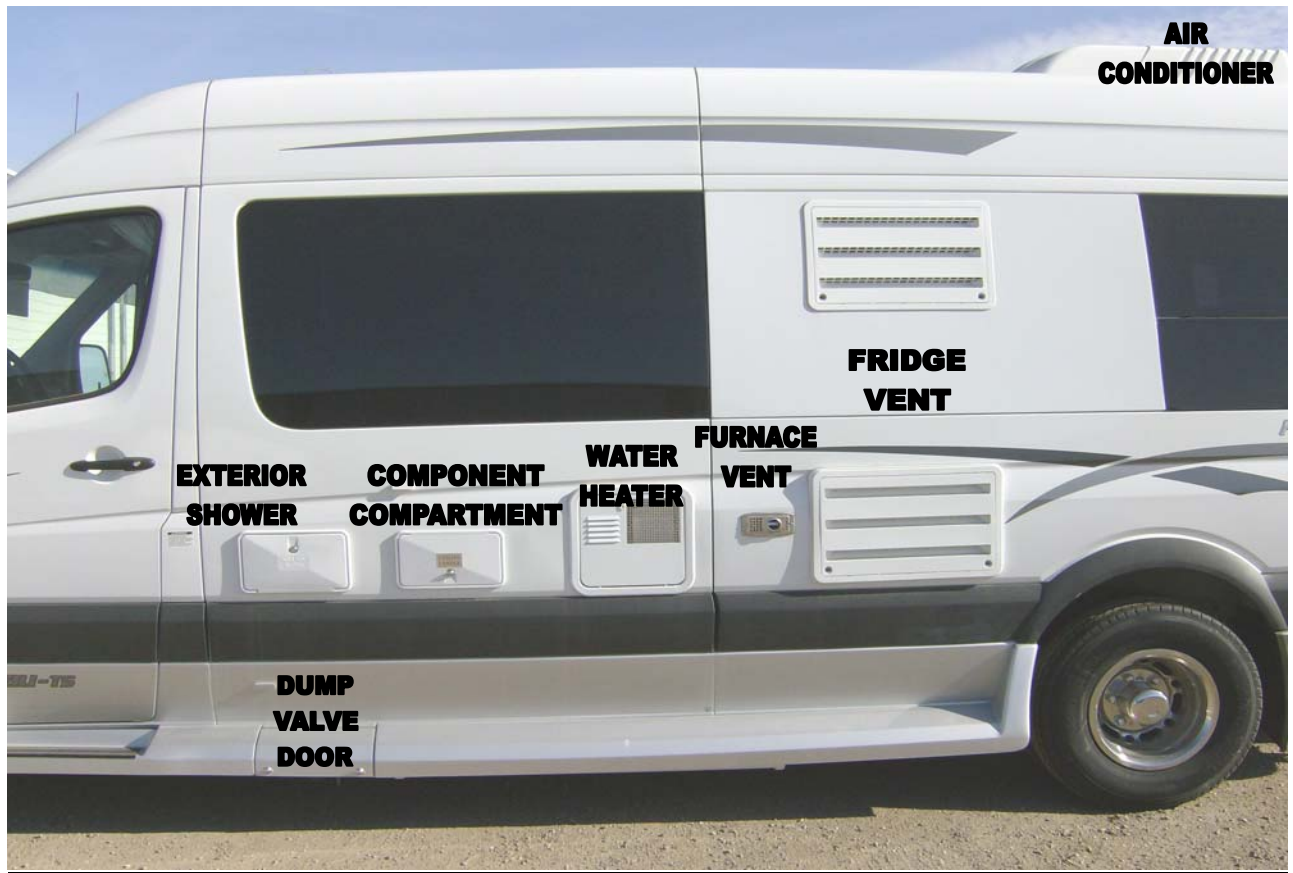
NOTE: The height of your Motorhome may vary depending upon the tire pressure, air ride pressure and optional components mounted on the roof. The width of the motor home will vary with the positions of the outside mirrors. All measurements and capacities are approximate. There are many variables in the construction of the vehicle for measurements to be absolute.

TIRE/ AIR RIDE PRESSURE:

Tire pressures as recommended by Daimler Chrysler. Tire Size LT 215/ 85 R 16

FRONT TIRES: 55 PSI/ 380 kPa

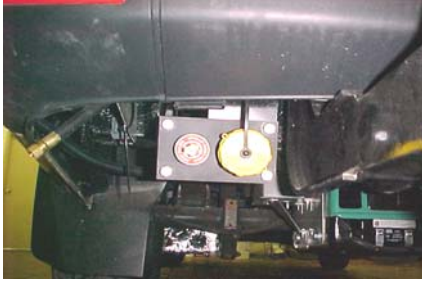
REAR TIRES: 61 PSI/ 420 kPa (Dual Wheels)



LP (propane) Tank remote Fill and Breather

Located under the driver side rear bumper of the vehicle, beside the tire carrier.

NOTE: Only fill your propane tank to 80% capacity.



Driver's Side Furnace Vent

Located on the driver's side next to the water heater this vent is the exhaust and fresh air return for your furnace. NOTE: For maximum efficiency of your furnace this vent should be free from obstruction. This vent is hot when operating



Driver's Side Exterior Shower Compartment (Optional)

Located beside the vehicle fuel fill door, this compartment contains a retractable shower head and hot and cold water taps. NOTE: When winterizing your Motorhome be sure to winterize this tap and the shower hose.



Driver's Side Water Heater Vent

Located mid body on the driver side, this vent gives you access to the exterior working components of the water heater.



NOTE: Keep this vent clear from all obstructions.

Driver's Side Sewer Hose Compartment

Located under the driver's side running board. Access is through the sewer dump valve door, remove the white screw cap on the right hand side.



Driver's Side Sewer Dump Valves

Located in the driver's side running board door. These dump handles allow you to dump your gray and black waste tanks.

NOTE: Dump your black water first to allow your gray water to flush the black water through the hose.



Driver's Side Fridge Vents

Located center on the Driver's side panel. These vents allow for air flow for your fridge coils, which help with the cooling process of the fridge.

NOTE: Ensure that these vents are free from all obstructions.



Passenger's Side Fresh Water Holding Tank Fill

Located inside the potable water door next to the passenger sliding door.



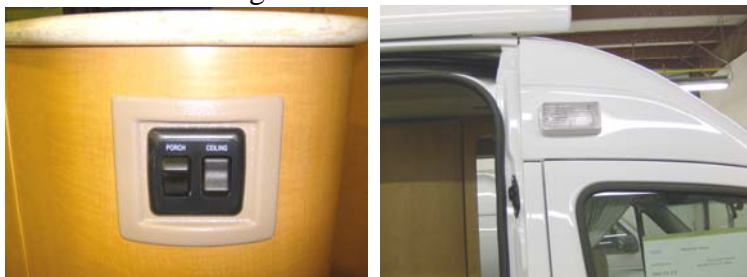
Passenger's Side Exterior 110-Volt Plug

Located on the passenger's side exterior rear panel, this plug will only function if power is supplied through the generator or shore power.



Passenger's Side Exterior Porch Light

Located in the centre upper section of the passenger's sidewall, this light is controlled by the switch on the kitchen end gable.



Coach & Chassis Batteries

The coach battery is located under the hood of the vehicle, it is an Interstate SRM 27 series deep cycle battery. This battery operates the Motor Home portion of your vehicle.



The chassis battery as supplied by Sprinter is located under the driver floorboard. See your Sprinter manual for details.

TRAVEL PREPARATION

Before You Leave

Prior heading off on your adventures, you should always check to ensure that:

- The LP (propane) gas is off at the main valve
- All black and gray wastewater tanks are empty and closed.
- All electrical cords and exterior hoses are stored back into their respective compartments
- chassis fluid levels are at recommended levels
- chassis tire pressure levels are at recommended levels
- Chassis exterior lighting is functional
- All exterior components are secure and closed
- the refrigerator power switch is changed to 12-Volt
(The 12volt/ DC system is there to maintain the coolness of the refrigerator while in motion. The Refrigerator should have been cooled on propane or AC electric before filling it and leaving on you trip.)
- All interior compartments and drawers are closed and locked into position
- All interior components are secure and in place
- The furnace control switch on the thermostat is off
- The TV swing up is locked into a position
- The site is left in better condition than when you arrived.

While In Motion

It is not recommended that you use any of your appliances while in motion. Warning: Do not use any LP (propane) gas appliances while in motion. While you are in motion, you will have power to all 12-Volt components such as the dome lights, water pump, roof vent, 12-Volt receptacle, TV, and DVD. You will not have power to the microwave, 110-Volt receptacles, coffee maker and roof air conditioner unless your vehicle is equipped with an inverter.

Upon Arrival at Your Site

Once you arrive at a site, please ensure that:

- Your motorhome is parked in a level position so that your components will be at their optimum performance (place a bubble level in the freezer shelf of the refrigerator to use as a base and level your unit according to this)
- all exterior vents are clear from obstructions
- the black and gray water waste tank valves are closed
- Hook up your 110-Volt power cord to your coach and then to the site receptacle (if supplied at site)
- hook up your fresh water line to the city water pressure connection (if supplied at site)
(It is recommended for pressurized city water that a water regulator be used.)
- Turn the LP (propane) gas on
- Turn the refrigerator switch power to LP (propane) gas selection or 110-Volt power (AC).
- Turn the water heater on (Before turning it on, make sure the water heater is filled with water)
- Connect park cable and telephone jack (if supplied)

MOTORHOME SYSTEMS

LP (propane) Gas System

Your motorhome is equipped with a Liquid Propane (LP) gas system that provides fuel to the appliances (refrigerator, cook top, water heater, furnace, and generator.)

The storage tank is located under the chassis, in between the hitch mounting plates.

The main shut-off valve is operated electronically by the switch located in the driver's outside component compartment. (Ensure this switch is on before operating appliances.)

The filler valve and bleeder valve for the LP (propane) gas is located on the driver side under the rear bumper.

The LP (propane) gas regulator is located on the propane tank under the vehicle. LP (propane) gas regulators must always be installed with the diaphragm vent facing downward. Regulators that are not in compartments have been equipped with a protective cover. Make sure that the regulator vent faces downward and that the cover is kept in place to minimize vent blockage that could result in excessive gas pressure causing fire or explosion.

The LP (propane) tank gauge is located on the monitor panel at the top of the appliance cabinet.

Warning: Do not bring or store LP (propane) gas containers, gasoline or other flammable liquids inside the vehicle, because a fire or explosion may result. LP (propane) gas containers should not be placed or stored inside the vehicle, as LP (propane) gas containers are equipped with safety devices that relieve excessive pressure by discharging gas into the atmosphere.

Warning: It is not safe to use cooking appliances for comfort heating. Cooking appliances need fresh air for safe operation. Unlike homes, the amount of oxygen supply in the unit is limited due to the size of the vehicle. Proper ventilation when using the cooking appliance(s) will avoid dangers of asphyxiation. It is especially important that cooking appliances not be used for comfort heating as the danger of asphyxiation is greater when the appliance is used for a long period of time. Therefore, before operation, be sure to open a source of ventilation.

Warning: Do not use portable fuel burning equipment, including wood and charcoal grills and stoves inside the motorhome. The use of this equipment inside the recreational vehicle may cause fire or asphyxiation.

DO NOT FILL LP (propane) CONTAINER TO MORE THAN 80% CAPACITY. Overfilling the LP (propane) gas container can result in uncontrolled gas flow, which can cause fire or explosion. A properly filled container will contain approximately 80% of its volume of LP (propane) gas.

If you smell gas:

1. Extinguish any open flames, pilot lights and all smoking materials.
2. Do not touch any electrical switches.
3. Shut off the gas supply at the tank valve or gas supply connection.
4. Open all the doors and other ventilating openings.
5. Leave the area until the odour clears and you are sure there is no further risk to you or others.
6. Have the gas system checked and leakage source corrected before using again.

LP (propane) Remote Off/On Switch

Located in the Driver Side Component compartment. This switch activates the 12-volt electric solenoid.



How to Use the LP (propane) Appliances

Turn your red key disconnect switch to the on position. (Located in the small driver side ottoman door in the TS.) Turn your electric propane valve switch to the on position. (Located in the exterior component compartment).

Cook Top

The vehicle is equipped with a Two-Burner Flush Mount Cook Top located in the kitchen counter top.

- 1) Lift the glass cover.
- 2) Turn the selected burner knob counter clockwise to maximum.
- 3) Depress the burner knob. (this will open the gas flow)

Warning: this knob should only be depressed for a couple of seconds before the igniter is applied.

- 4) Ignite the burner using a lighter, match or other suitable ignition device. (The igniter should be placed close to the burner discharge.) (If your vehicle is equipped with the SMEV cook top you will have an igniter.)
- 5) Keep the burner knob depressed for several seconds after ignition.
- 6) Turn the burner knob to adjust the flame to the appropriate heat setting.

When you have finished using the cook top, turn the burner knob to the off position allow the burner to cool before closing the cook top cover. (See your Cramer/Dometic or Smev instructions for more complete details: Cooking, cleaning & maintenance)

It is recommended that the Fantastic Fan be used for ventilation when this appliance is in use.

Dometic



Smev



Furnace

Your vehicle is equipped with a 16,000 BTU Suburban LP (propane) gas Auto Ignition Furnace. The furnace is located below the below the refrigerator.

- 1) Select Heat with the mode button on the thermostat. (Thermostat is located above the TV.)
- 2) Using the up and down arrows select the desired temperature. The Furnace will auto ignite and cycle through fan and heating. The furnace will cycle keeping the desired temperature.



Refrigerator

Your vehicle is equipped with a NORCOLD three way 6.3 cubic foot fridge [LP (propane) gas, AC & DC].

Note: 12 volt power must be present for your fridge to function.

For best cooling results allow the fridge to cool for 8 hrs on LP (propane) gas or AC power before loading the fridge.



- 1) Turn on the refrigerator by pushing the ON/OFF button on the center control panel. Turn off the refrigerator by pushing and holding the button for a few seconds.
- 2) Press the MODE button till you reach your desired mode of cooling. If you choose AUTO, your fridge will choose AC or 120 volt first. If AC is not available it will choose LP gas. If LP gas is not available it will choose DC or 12 volt.
- 3) Press the TEMP SET button the temperature 1-9 will be displayed, press temp button and hold until the desired temperature is displayed. 1 is the warmest 9 are the coldest.

Note: For the best cooling results your vehicle should be level and the exterior refrigerator vents free from obstructions.

Note: See the Norcold fridge manual for complete instructions.

Water Heater

Your vehicle is equipped with a 6 gallon LP (propane) Suburban gas Auto Ignition Water Heater. The water heater is located in the cabinet next to the furnace.

- 1) Check your by-pass valve located in the cabinet door next to the furnace. The valves at the top (red line) and bottom (blue line) of the water heater should be open. The valve between the top and bottom valve should be closed. The valves are open if the handle lines up with the water line, and are closed when making a T with the water line.

SUMMER USEABLE



WINTER NOT USABLE



- 2) Ensure the water heater is full of water. To check this open the water heater vent on the exterior of the coach and lift the pressure relief valve, water should flow out of the spigot.
- 3) Fill your water heater by running your water pump or hooking a pressurized source onto the city water hook up. You will have to open a hot water tap in the vehicle to allow the air from the hot water tank to escape while the tank fills with water (this can also be done by opening the pressure release valve on the water heater until water flows out of the spigot).
- 4) Once the water heater is full turn the water heater switch located above the microwave to the on position.

Note: Your LP (propane) gas appliances may not light on the first try. There may be air in the LP (propane) gas lines that will dissipate as the gas pressurizes the lines.

Fresh Water System

The water system built into your motorhome provides full service similar to the system in your home. A 12-Volt self-priming pump draws pressurized water from the fresh water tank to all cold faucets and the water heater. An automatic pressure switch located in the water pump maintains a positive line pressure between 20 to 30 p.s.i. The fresh and gray water tanks are located underneath the floor. The black water tank is located above the floor under the toilet and shower pan.

Filling the Fresh Water Tank

- 1) Open the passenger side potable water door.
- 2) Remove the large white cap from the backside of the kitchen cabinet.
- 3) Insert a garden hose into the fill opening.
- 4) Turn the water source on to a medium flow rate, a high pressure flow will cause water to out of the fill opening.
- 5) Monitor the fill level using the FRESH button on the monitor panel located above the microwave. Do not over fill this tank. You may also see water coming out through the fill tube or air vent screen this also indicates the tank is full.
- 6) If you feel you have over filled your fresh water tank drain some of the water off by using the drain spigot located on the tank, under the passenger side running board. (See photo page 10 for approximate location.)



NOTE: If you notice water running out from underneath the van when filling the tank, there is a drain spigot on the fresh water tank to ensure it is closed.

City Water Connection

The city water connection is located in the driver's side component compartment. The city water connection is a convenience for you when you have access to an outside water source. When hooking up the city water connection you should make sure that the water pump switch is turned off and that all water faucets are closed.

- 1) Open the driver side component compartment
- 2) Remove the plastic insert from the city water connection.
- 3) Attach a garden hose to the connection, ensure the fitting is tight
- 4) Turn the water source on to a medium pressure.
- 5) Check for leaks at the city water connection. (you may have to tighten this connection)
- 6) Check for leaks under the vehicle under pressure, your low point drain valves may be open. (located above the fresh water tank drain)



NOTE: In different areas the water pressure may vary. It is advisable to use a water pressure regulator because excessive pressure may result in water-line damage. The city water system bypasses the fresh water holding tank and feeds the water lines directly so that you will not have to use the water pump. To disconnect the city water system, first turn off the water source, then open a faucet to relieve some of the pressure in the lines (if you do not open a faucet to relieve some of the pressure, when you unhook the water line, water may spray out), then unhook the water line.

Water Pump

The Sure Flo water pump is located in the cabinet below the sink in the bathroom. To activate the water pump use the switch at the bottom of the monitor panel beside your microwave.



Trouble Shooting

If the pump will not prime, please check:

- to make sure there is water in the holding tank
- to make sure that the battery is not run down
- for kinks in the inlet water line
- for leaks at inlet fittings (if air is leaking into inlet fittings, tighten fittings or apply clamps as necessary)
- for clogged lines
- The inline flow filter, on the inlet side of your water pump.

If the water pressure drops:

- make sure faucet aerators are clean
- check to make sure there is water in the holding tank
- check to make sure the battery is not run down
- check faucets and connections for leaks.

If the pump runs when there is no apparent demand for water:

- make sure there is water in the holding tank
- check all faucets and fixtures to make sure they are all shut off and not leaking
- check line for leaks.

Toilet

Please refer to the manufacturer's operating instructions.

Toilet Trouble Shooting:

1. Water keeps running in the bowl:

- check to see if all the levers are turned all the way back. Sticking may be caused by foreign material on the waste valve blade seal at the bottom of the bowl. If the problem persists, you may need to replace the water valve.

2. The Toilet leaks, there is water on the floor:

- if the leak is in the back of the toilet, check the water supply line connection and refer to the manufacturer's installation instructions. If the leak is at the toilet flange area (where the toilet mounts to the floor), check the toilet flange nuts for tightness.

3. Poor flush pressure:

- The levers must be held fully open during the flush. A good flush should be obtained within 2 to 3 seconds. If the problem persists, remove the water supply line and check the water supply. The water supply rate should be at least 10 litres/2.5 gallons per minute to ensure an adequate flush.

Shower

To protect the surface of your ABS plastic shower pan, it is recommended that a rubber shower mat be placed in the shower pan. Use a non-abrasive cleaner to clean your shower compartment. NOTE: Do not use highly concentrated or high acid content household cleaners, as these may damage the shower compartment.

- 1) Remove the shower pan floor carpet.
- 2) Velcro the side window removable shower curtain into place.
- 3) Slide the shower curtain across the door opening.

- 4) Adjust the water temperature to the desired level.
- 5) Lift the center flow lever between the taps.

It is recommended that the fantastic fan be run while shower is in use to remove humidity. It is recommended that the bathroom be wiped down after the shower has been used. This will help prevent mildew and other residues from forming on shower walls.

Waste System

The Plateau is equipped with three waste tanks.

- 1) Black water tank located above the floor of the van directly under the toilet. Only the toilet water and solid waste enter this tank. This tank is approximately 12 gallons or 45.4 liters.
- 2) Gray water tanks are located under the driver side of the vehicle. This tank handles wastewater from the sinks and the shower. This tank is approximately 35 gallons or 132 liters.

Before using your waste holding tank, deodorize it by adding one gallon of water and commercial tank deodorizer through the toilet.

Draining Waste Holding Tanks

- 1) Open the dump valve door located on the driver side running board.
- 2) Remove the white cap located on the right hand side of the opening.
- 3) Remove the sewer hose from behind the white cap.



- 4) Press in the black and gray dump valve handles to ensure the valves are closed.
- 5) Remove the black termination cap.
- 6) Connect the sewer hose to the drain outlet, and put the opposite end into an appropriate sewer dump outlet.



- 7) Open the termination valve on the solid waste holding tank. Black handle. Once this tank is empty, then open the valve for the gray waste tank Gray handle. A garden hose may be left running into the toilet with the valve open to further rinse the tank and sewer hose.
- 8) Close the termination valves and replace the cap and store your sewer hose back in the canister.

Deodorize the empty tank by adding one gallon of water and commercial holding tank deodorizer through the tank.

NOTE: If the black water holding tank is allowed to overflow, the overflow may back up through the toilet drain.

NOTE: If the gray water tank is allowed to overflow, the overflow may back up through the shower drain.

If you are using a sewer hook up in a RV park, keep the valve closed until the holding tank is at least partially full, then drain. The large quantity of waste flow will provide more effective drainage and reduce tank stoppages.

NOTE: It is important to clean your monitor probes in your holding tank to ensure their reliability. See your RV dealer for suggested cleaning solutions.

Winterizing

- 1) Drain your fresh water tank. The fresh water tank is located under the passenger side running board (see page 10 for approximate location). Open the drain spigot by turning the top lever and let the water drain (There may be a small amount of water left in the tank after it is drained.).

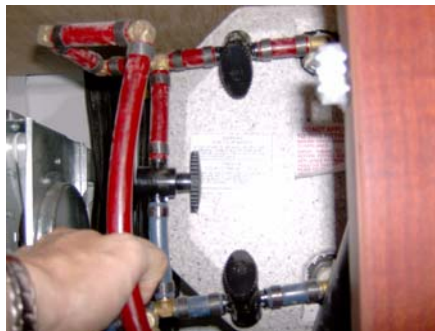


- 2) Drain your hot water tank. This is done by removing the Anode rod at the bottom of the water heater tank on the outside of the vehicle. The Anode rod is a 1 1/16" nut. Loosely reinstall the anode rod after the water heater is drained, this will prevent dust and insects from entering the heater while in storage

SUMMER



WINTER



- 3) Turn the water heater bypass valves located in the cabinet beside the refrigerator inside of the vehicle to the winter position. The valve handle at the top of water heater on the red line should be closed, the valve at the bottom of the water heater on the blue line should be closed. The valve in between where the red and blue lines connect should be open. (The valves are closed when the handle of the valve makes a T with the water line.)

4) Remove the water line from the inlet side of the water pump. (This is the clear plastic line going into the filter.) Connect a siphon hose to the inlet side of the water pump place the other end in a container RV Non toxic antifreeze. Turn on your water pump.



NOTE: Siphon hose consists of 25" of 1/2" clear tubing with a fitting to attach to the water pump. (Can be purchased through a RV dealer).

5) Open the kitchen and bathroom faucets one at a time allowing the antifreeze to flow through both the hot and the cold sides. Be sure to also open the toilet valve and exterior shower faucet. Turn off the water pump and disconnect the siphon hose, reattach the original fitting.

6) Pour 1/2 cup of anti freeze down each drain (Kitchen sink, bathroom sink and shower drain.)

7) Fully charge your auxiliary and turn off and remove the red key disconnect. The Red Key Disconnect is located under the Driver Side seat below the TV.



8) Turn you thermostat to the off position using the mode button.

9) Turn your propane tank off.

10) Place your fridge door in a slightly ajar position.

It is recommended that you start and run your vehicle and generator once a month during the winter season.

Winter Use

We recommend that the water system not be used when the outside temperature drops below the freezing point. You should ensure that your unit is completely winterized by that time. If it is necessary to use the water system, we suggest that you bring containers of fresh water with you and add non-toxic RV antifreeze to the gray and black water holding tanks. **NOTE:** Keep in mind that as you add more water to the holding tanks the antifreeze will dilute more than the recommended amount and may start to freeze earlier at cold temperatures.

Living Area Electrical System

The Motorhome living area electrical system is designed for convenience. It is capable of supplying the vehicle with at least two sources of power. A 12-Volt auxiliary battery supplies power to the interior components (except AC current plug receptacles, roof air conditioner, microwave, fridge on A and coffee maker) for short-term use. This battery is automatically charged when the motorhome is running or when you are plugged into a 110 volt power source with the disconnect switch in the on position.

For long term use, your vehicle may be powered by plugging into a 110-Volt external power source with the supplied 25-foot power cable. The yellow 25-foot power cable supplied with your coach will have to be connected to your coach and then to a 110 volt power source (30 amp outlet is recommended). This will supply 110-Volt power throughout the interior and supply power through a power converter to all 12-Volt components.

NOTE: Always connect the power cord to your coach first and then the external power source.

Your unit is equipped with a 110/12-Volt power converter. Its function is to take part of the 110-Volt current that is received when the unit is plugged into an external power source and change it to 12-Volts (which powers most of the motorhome components). It also provides 110-Volt power to the components that only require 110-Volts.

NOTE: The 12-Volt or DC power on your fridge should only be used while in motion or running the vehicle engine.

12 volt or DC Equipment	110 volt Or AC Equipment
TV when plugged into the Inverter	TV when plugged into the AC receptacle
Refrigerator when on DC or LP (propane) gas	Refrigerator on AC
Interior & Exterior Coach Lights	Microwave or Convection oven
DVD Player, Antenna Booster and Amplifier	Air Conditioner
Water Pump	110 volt Plugs
Water Heater	Coffee Maker (if equipped)
LP (propane) gas & CO Alarms	Power Converter
Generator Start Switch	
Furnace	
Power Sofa (if equipped)	
LP (propane) Switch	

Electrical Distribution Panel

The Plateau is equipped with an Iota distribution panel that houses the breakers for the 110-volt system and the blade fuses for the 12-volt system. The distribution panel is located on the sofa bench face.

Remove the large vertical smoked plastic cover panel to access the 110-volt breakers or the small horizontal cover panel for the 12 volt fuses.



12-Volt Manual Reset Breakers and Converter Output Fuses

Your motorhome has two manual re-setting breakers. If you have the optional electric rear sofa, you will have three manual resetting breakers. Access to these breakers is through a compartment door found on the driver ottoman in the TS. These breakers have a 40 and 30-amp capacity. The 40-amp breaker controls the power converter and the 30-amp breaker controls the refrigerator when it's running on 12-Volts. If you have the electric sofa option, you will have an additional 30-amp breaker. This breaker controls the power to your electric sofa.

If you are experiencing any difficulties with your power converter, refrigerator or optional electric sofa when on 12-Volt, check these breakers first to see that they are tripped. There is a small re-set button is located on the copper post end of the breaker. Simply push it in if it is tripped.



There are two 30-amp converter output fuses. The converter is located under the power sofa on the Driver side in the TS. These fuses will blow if the auxiliary battery is cross-wired.

*White is the ground for the RV industry.

12-Volt Battery Disconnect Switch

There is a red key, 12-Volt disconnect switch located on the driver's side of the coach, in the door located on the driver's ottoman, facing the rear of sofa in the TS (same compartment as the manual reset breakers). When the key is in the "ON" position it will be locked in place. When the key is in the "OFF" position it can be easily removed, which will stop all 12-Volt power supplied to your coach. **Note This disconnect will have to be on to charge your battery from the converter in this vehicle. If your vehicle is going to be parked for longer than a 48 hr period turn this switch to the off position as the detectors and other appliances have a drain on the battery.**

Auxiliary Battery

The auxiliary battery (coach battery) is located under the hood of the vehicle; it is an Interstate SRM 27 series battery. This battery operates the Motor Home portion of your vehicle only.



The chassis battery and auxiliary battery are two separate systems. Both batteries are charged from the alternator, but only the auxiliary battery is charged from the converter. The Chassis battery powers all chassis related items such as the map light between the driver and passenger seat, all dash features, driving lights, power mirrors, locks and windows. The auxiliary battery powers all living area lighting, DC appliances and air ride compressor.

The chassis battery as supplied by Sprinter is located under the driver floorboard. See your Sprinter manual for details.

Battery Care

Your auxiliary battery must be regularly cleaned and maintained at least once a month in order to provide a reliable and constant power source to your Motor home. To ensure satisfactory battery performance, battery terminal cleanliness is essential. NOTE: Please see the DODGE manufacturer's instructions for detailed maintenance recommendations.

Warning: Batteries give off explosive gases that can cause severe personal injury. Do not smoke in or around the battery and keep open flames and other sources of ignition well away from the battery. Remember that batteries can and do, EXPLODE! Be very careful. Battery electrolytes can cause severe eye damage and skin burns. Always wear protective equipment (goggles, rubber gloves, a protective apron, etc.) when working with batteries.

Check you battery fluid levels on a regular bases. If the fluid level is down fill it with distilled water.

External Power

A 25- foot, 30-amp power cord. In order to activate all power circuits, connect the yellow power cord to your coach in the driver's side component compartment and to an adequate 110-Volt power source (30 amp source.) . The connector is rated for 30-amp capacity. NOTE: The male end of the power cord is a 30-amp plug, therefore you may require an adapter to convert the plug into the 110-Volt style. Most RV parks are equipped with 30-amp plug-ins. Remember to always attach the power cord to your coach first, and then to the power source.

Monitor Panel Area

There is a monitor panel located beside the microwave, above the closet. In this panel is the carbon monoxide sensor, water heater control switch, generator control switch (optional) and the water pump control switch which also monitors the black water, gray water, fresh water, LP (propane) gas and battery levels.



Generator

If your unit is equipped with a generator, it will be located under the vehicle in front of the LP (propane) tank. Access to the generator is from underneath the chassis. There is no access through the interior as to prevent exhaust gases from seeping into the living compartment. The generator will provide an added source of power to run the electrical system when you are not plugged into a 110-Volt power source.

Starting the Generator:

- 1) Turn on the red key disconnect switch.
- 2) Turn on the LP (propane) gas electrical switch in the exterior component compartment area.
- 3) Press the start switch in the monitor panel area.

NOTE: It may take a few seconds initially for the generator to start. Your generator draws its gas supply from your LP (propane) gas tank. Once the generator is running, it supplies power to the entire electrical system, just as if your unit was plugged into a 110-Volt power source. You will have to balance your electrical consumption as you have a limited number of watts/ amps available.

Please refer to the manufacturer's operating manual for complete operating instructions and maintenance procedures.

NOTE: If your unit is equipped with a generator, it is essential that you run your generator at least ½ hour a month under load (microwave, AC, coffee maker, etc.) to keep the generator fuel from damaging the carburetor.

NOTE: For your safety and protection, all generator or generator-ready units are equipped with an automatic transfer switch that will allow your coach to receive power from either shore power or your generator.

MOTORHOME INTERIOR

Interior Cockpit Map Light

Please follow the vehicle manufactures instructions for operating procedures these instructions will be found in the Dodge Sprinter manual.

Refrigerator - Norcold

Your Norcold refrigerator is designed for 3-way operation, using 12-Volt DC, 110-Volt AC and propane power. A 12 volt power source must be present for all operations.

When your motorhome is stationary, it should be leveled for your refrigerator to provide the proper cooling. A bubble level should be placed on the freezer shelf to check the refrigerator for levelness. If the refrigerator is not level you may have improper cooling.

. NOTE: The refrigerator should be turned to 12-Volt when the vehicle will be in motion and the Propane must be turned off.

NOTE: The DC or 12-Volt setting is for transportation purposes only. It is recommended that if you are going to be stopped for more than a short period of time, you should switch your refrigerator to propane or an AC setting and plug into a 110-Volt supply.

NOTE: Please refer to the Norcold operating manual for complete operating instructions and maintenance procedures.

NOTE: For operating instructions for the remainder of your appliances, please see each respective manufacturers' operating manuals.

Microwave- Dometic

Your Dometic microwave operates of 110 volt AC power only. To use your microwave you must be plugged into shore power or have the generator running. (the microwave cannot be used at the same time as the roof AC unit when operating on the generator)

You may also have the Sharp Micro/convection oven installed in your motor home.

NOTE: Please refer to the manufactures operating instructions for maintenance, operation and cooking.

TV and DVD (Optional)

If your motor home is equipped with TV and DVD components, you will find these located in the rear entertainment center. These two components are powered by a 12-Volt power source. The TV is powered by a 12 volt inverter located behind the TV.

NOTE: Your DVD is a player only; it will not record. To play a CD or MP3 the TV must be in the on position.



22" THEATRE SYSTEM

Basic Operating Manual

A) COMPONENTS:

- 1) 22" Flat Screen Monitor with swing up cabinet
- 2) DVD/CD/MP3 player
- 3) 400 watt Inverter
- 4) Amplifier
- 5) Noise reduction ground loop
- 6) Auxiliary power switch
- 7) Satellite speakers
- 8) Antenna booster
- 9) Optional AC power source

B) BASIC OPERATION:

- 1) Turn the auxiliary power switch to the on position.

Note you will hear a fan noise come on if you are powering your TV through the inverter. (If you are powering your TV through the inverter and the Fan does not come on check the power switch at the bottom of the inverter.)

- 2) Turn on the TV using the small button on the side of the TV.
- 3) Using the source button, select AV for the DVD player or Antenna if you want local air or cable channels.

4) For Cable simply turn off the antenna booster leaving the source on antenna.

***Note: For local air channels ensure your antenna is cranked up and the booster switch is in the on position. You may have to rotate your antenna for better reception.**

5) Auto Programming for Complete Area Channel Operation (On your remote)

- a) Push the menu button.
- b) Using the up and down buttons push the down button and move to the Channel symbol.
- c) Push the enter button, using the arrow key move down to auto program.
- d) Push the enter button, using the arrow key move down to air or cable.
- e) Push the enter button, the TV will begin auto programming.
- f) Push the menu button to exit the auto programming.

C) POWER SOURCE :

There are two options for Ac power on you TV system.

For operation the power button in the upper shirt closet must be in the on position.



- 1) When the motor home is not plugged in to an outside power source or not operating off your generator, the power source is through your DC battery and the inverter. The inverter is located behind the TV, unlock the TV flip it up to gain access to the inverter. The inverter has a power switch located on the unit. A fan will run when the inverter is on.
- 2) When the motor home is plugged in or operating off of the generator there is a AC power outlet located behind the TV cabinet, unplug the AC power cord from the inverter and plug it into the AC outlet. Turn off the inverter to eliminate the inverter fan noise.



- A) 400 watt inverter
- B) Amplifier
- C) Noise reduction ground loop
- D) Antenna booster
- E) AC Power Source



Antenna Booster

- A) Green indicator light
- B) Booster Off/On switch.
- C) 12 volt power source 3 amp



Inverter
 On/Off switch
 TV AC power cord



Samsung 22" LCD TV
 Full Digital TV
 Right side Operation Button
 Source
 Menu
 Channel Up/Down
 Volume Up/Down
 Power

TS Bed Assembly

Using the sofa switches beside the DVD player on the passenger side, slide the sofa to the full forward position, using the second switch lay the sofa down to a flat position. Place the bed support board located in the closet on the maple support rails between the two ottoman benches. Place the ottoman back rest cushions on the bed board between the ottoman seat cushions.



TD Full Size Bed Assembly

To make up the Full-size bed in the TD model, remove the night table from between the two twin beds and store it underneath the rear seat compartment accessed from the exterior rear door. Then, remove the support boards and store them underneath both twin beds. Place these boards along the oak support rails, which are along the sides of the twin beds. Finally, place the four backrest cushions in between the twin beds on the support boards.

PLATEAU FEATURES:**TD****TS**

	TD	TS	
NORCOLD 3-way Refrigerator	X	X	
Dometic .7 cu.ft. Microwave	X	X	
2 Burner Flush Mount Cook Top with Glass Cover	X	X	
Atwood 16,000 BTU Auto Ignition Furnace	X	X	
Suburban 6 gal Auto Ignition Water Heater	X	X	
Sure-Flo Demand Water System	X	X	
Thetford Flush Toilet	X	X	
Self Contained Bathroom with Shower & Sink	X	X	
C.O. Detector	X	X	
LP (propane) Gas detector	X	X	
Smoke Detector	X	X	
Fire Extinguisher	X	X	
Fantastic Fan Roof Vent	X	X	
Coach Battery	X	X	
Battery Disconnect Switch	X	X	
45 amp Power Converter with Distribution Panel	X	X	
Monitor Panel System (Black, Gray, Fresh water, LP Gas & Battery)	X	X	
Fresh Water Fill	X	X	
Fresh Water Tank (90.8 L or 24 U.S. Gal)	X	X	
Grey Water Tanks (132 L or 35 U.S. Gal)	X	X	
Black Water Tank (45.4 L or 12 U.S. Gal)	X	X	
Generator Ready (switch, wire for connections & mount brackets)	X	X	
Exterior Shower	X	X	
*Rear Bed Area (70" X 76")	X	X	
*Power Sofa	N/A	X	
Awning Style Windows	X	X	
Rectangular Table	X	X	
Porch Light	X	X	
Cable TV Hook Up	X	X	
TV Antenna	X	X	
Phone Jack			
Water Heater By-Pass	X	X	
Fiberglass Running Boards	X	X	
Counter Top Flip Up	X	X	
Exterior Plug	X	X	
Sherwood Decorative Dash	X	X	
Remote Propane Shut Off	X	X	

NOTE: Pleasure-Way Ind. Ltd. reserves the right to make product changes at any time with out prior notice or obligation.

- The bed area measurements may vary, due to components inside the vehicle.